

The "Too Easy" Rogaine

Mark and Wil's Route

Drawn line: 63.7km. Control to control: 51.9km. End modified.

Spring 12 Hour Rogaine 23 October 2010

Celebrating WARA's 30th Anniversary and 139 magnificent rogaines

Western Australian Rogaining Association, PO Box 1201, Subiaco, WA, 6904

Thanks and appreciation to:

Mick & Glenys Chambers (Hash site)
 Ian & Rhonda Staples
 BHP Billiton Worsley Alumina Pty Ltd
 Leon Price (DEC)
 Steve Walkley (Water Corp)

Charlie Cherubino
 Joe & Ann Impicciatore
 Andrew Boaden
 Mark Hebiton
 Fieldon Pty Ltd



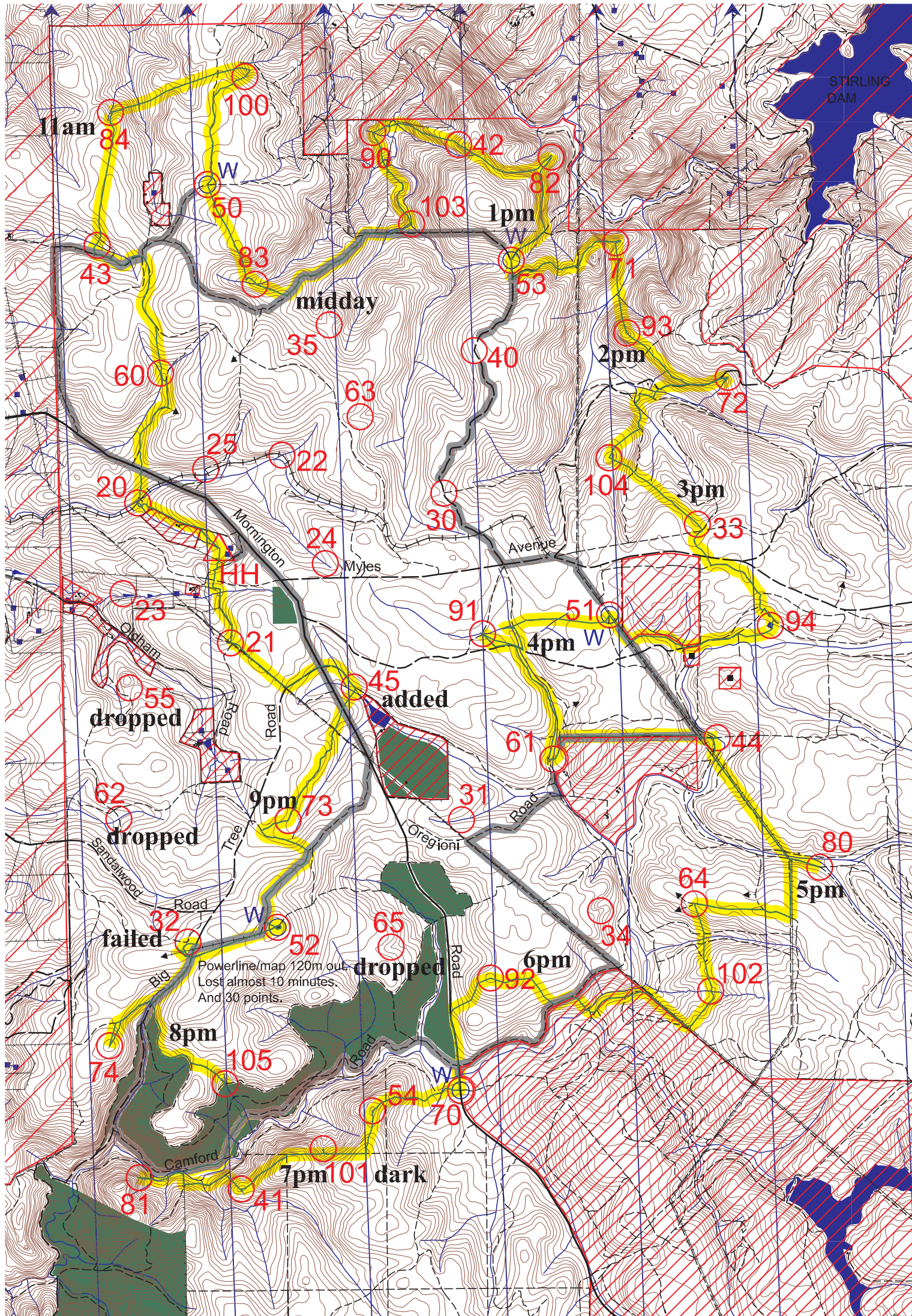
Setters and Veters

Jeff Conrades
 Brian Wade
 Ray & Dianne Parks

LEGEND

- Buildings/Fixed Objects
- Continuations
- Control
- Contours
- Dams
- Fences
- Power Line
- Hash House
- Magnetic North Line
- Out of Bounds
- Road, Sealed
- Road, Major Gravel
- Track
- Watercourse
- Water Drop
- Plantation
- Patrolled Road
- Formation (old railway)

yes Rogaining Is Fun - Isn't It?



Happy 30th Anniversary WARA

This map was produced using OCAD 9 by the Western Australian Rogaining Association, wa.rogaine.asn.au.
 Data supplied by Landgate and used under copy licence 393/93. Possession of this map does not give right of entry to this area.

SCALE 1:50,000, 5 metre contour interval

