



Event No.
218

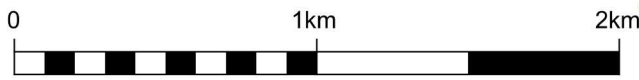
Sooo Good Six Hour Rogaine

WARA 6 hr Rogaine 19 March 2022

Western Australian Rogaining Association
PO Box 1201, Subiaco, WA 6904

eventinfo@wa.rogaine.asn.au

Emergency Contact
Satellite Phone
+881 622 449 701



SCALE 1:25,000 – 5 metre contour interval

LEGEND

Building	
Continuation	
Contours	
Control	
Crossing Point	
Dam	
Drain	
Farm/Forest Boundary	
Fenceline	
Fenceline, Ruined	
Hash House	
Magnetic North Line	
Out of Bounds	
Patrolled Road	
Mineral Workings	
Power Line	
Road, Bitumen	
Road, Major Gravel	
Road, Minor Gravel	
Watercourse	
Water Drop	
Light traffic area	

SETTERS and VETTERS

Emma Firth, Elena Ghergori
Chris and Sue Lee

Many Thanks to our helpers
Peter Mann
Josephine Taylor
Berty Ghergori



ANIMAL ADVENTURE HUNT

Look out for our clues out on the course!



Department of
**Local Government, Sport
and Cultural Industries**

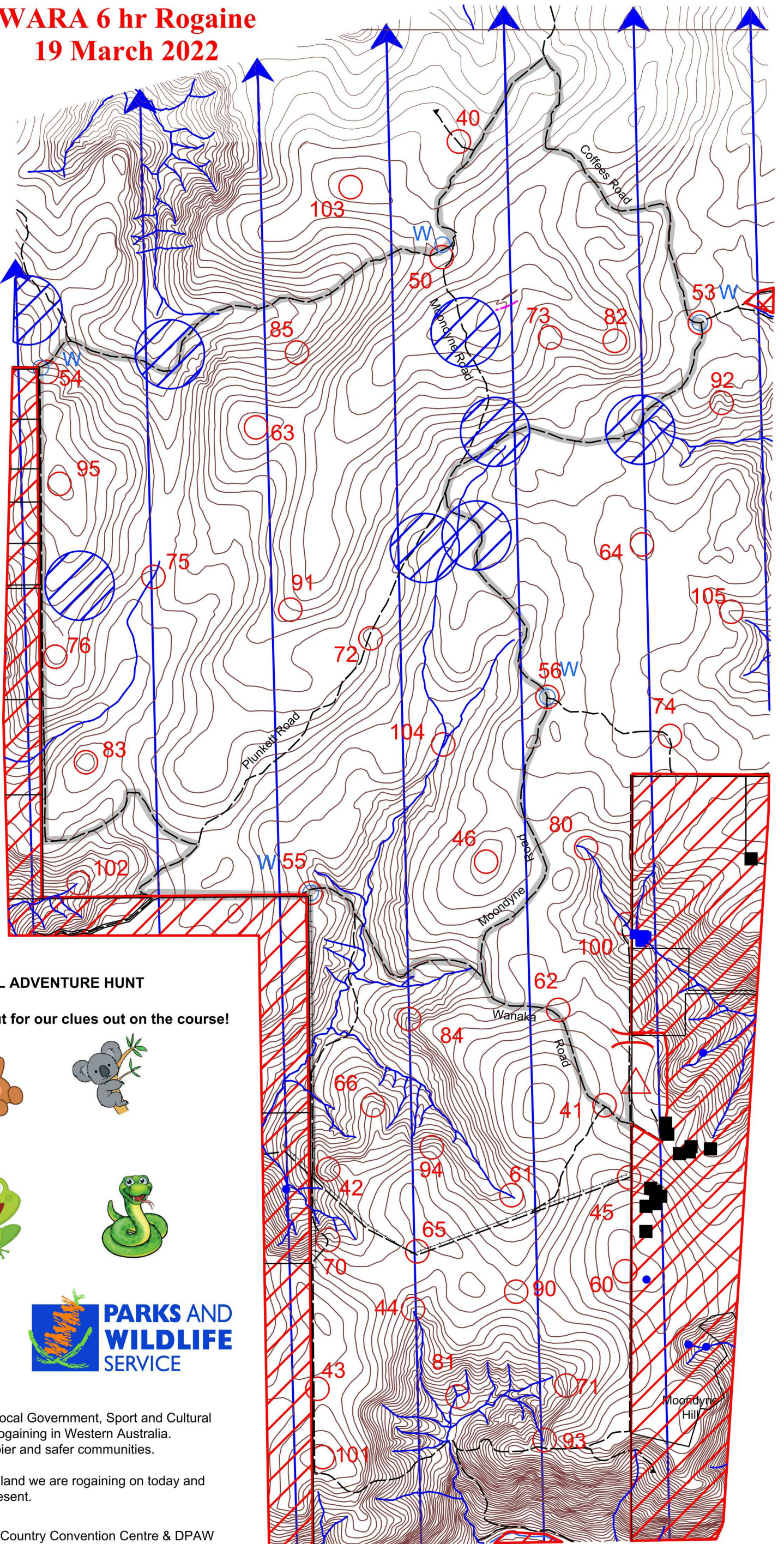


The State Government through the Department of Local Government, Sport and Cultural Industries, and Lotterywest is a major supporter of rogaining in Western Australia. Sport and recreation builds stronger, healthier, happier and safer communities.

WARA acknowledges the Traditional Owners of the land we are rogaining on today and would like to pay our respects to Elders past and present.

We thank Peter and Christine Nott from Moondyne Country Convention Centre & DPAW

This map was produced using OpenOrienteering Mapper using data supplied by Landgate issued under licence. Possession of this map does not give right of entry to area.



Soo Good 6 Hour Rogaine 19th March 2022

No.	Description	Points	No.	Description	Points	Important Information
40	The Track	40	80	Head of Watercourse	80	Maps Available From 1300
41	Road Junction	40	81	Watercourse Junction	80	
42	The Spur	40	82	The Spur	80	
43	The Saddle	40	83	The Knoll	80	
44	The Gully	40	84	The Spur	80	
45	Fence / Track Junction	40	85	The Gully	80	
46	The Broad Knoll	40				
50W	Track Junction 100m @ 210°	50	90	The Saddle	90	
53W	Track Junction 50m @ 230°	50	91	The Spur	90	
54W	Fence / Track Junction 50m @120°	50	92	The Gully	90	Hash House BBQ 18:30
55W	Fence Corner	50	93	Head of Watercourse	90	
56W	Track Junction 25m @ 40°	50	94	The Spur	90	
			95	The Knoll	90	
60	The Broad Knoll	60	100	Track / Creek Junction	100	Sunset 1828
61	The Watercourse	60	101	The Knoll	100	
62	Bend in the Road 45m @ 42°	60	102	Head of Watercourse	100	
63	The Broad Knoll	60	103	The Broad Knoll	100	Moonrise 1917
64	The Knoll	60	104	Watercourse Junction	100	
65	Bend in the Track	60	105	The Gully	100	
66	The Spur	60				
						Late Penalty 10 points per minute or part minute. LATE (no points) later than 2130
70	Bend in the Track 20m @ 90°	70				
71	A Gully	70				
72	The Gully	70				
73	The Broad Gully	70				
74	Bend in the Track	70				
75	Indistinct Watercourse	70				
76	The Broad Knoll	70				
Water Drops: At Controls 50,53,54,55 & 56 If you are injured please make your way to a water drop or a patrolled road and wait there for help.			Patrolled Roads. See roads indicated on the map:			Controls Used 44 Total Points 3060