

# Rivers Run Through It Paddlefoot Rogaine



Emergency Phone: 0417 552 399



Setters: Ann Smithson  
 Bruce Pilgrim  
 Vettors: Ignatius Johnston  
 Camillus Johnston  
 Kayak Hire: Grant Pepper

Scale 1:25000 No Contours  
 Low Water 05:57 0.12m  
 High Water 19:34 0.53m

Coordinate System: GDA 1994 MGA Zone 50  
 Projection: Universal Transverse Mercator Units: Metre  
 Map by: Ann Smithson 01-02-2022  
 SCALE (A3): 1:250000; No Contours

## LEGEND

- |            |                         |                             |                                       |
|------------|-------------------------|-----------------------------|---------------------------------------|
| Hash House | Water above datum       | Public Road                 | Patrolled Canoe Crossing              |
| Control    | Water below datum       | Footpath (access permitted) | Experienced paddlers only beyond line |
| Water Drop | Land (access permitted) | Building                    | Patrolled Waterways                   |
|            | Land - out of bounds    | Bridge                      |                                       |

Department of  
 Local Government, Sport  
 and Cultural Industries

lotterywest  
 supported

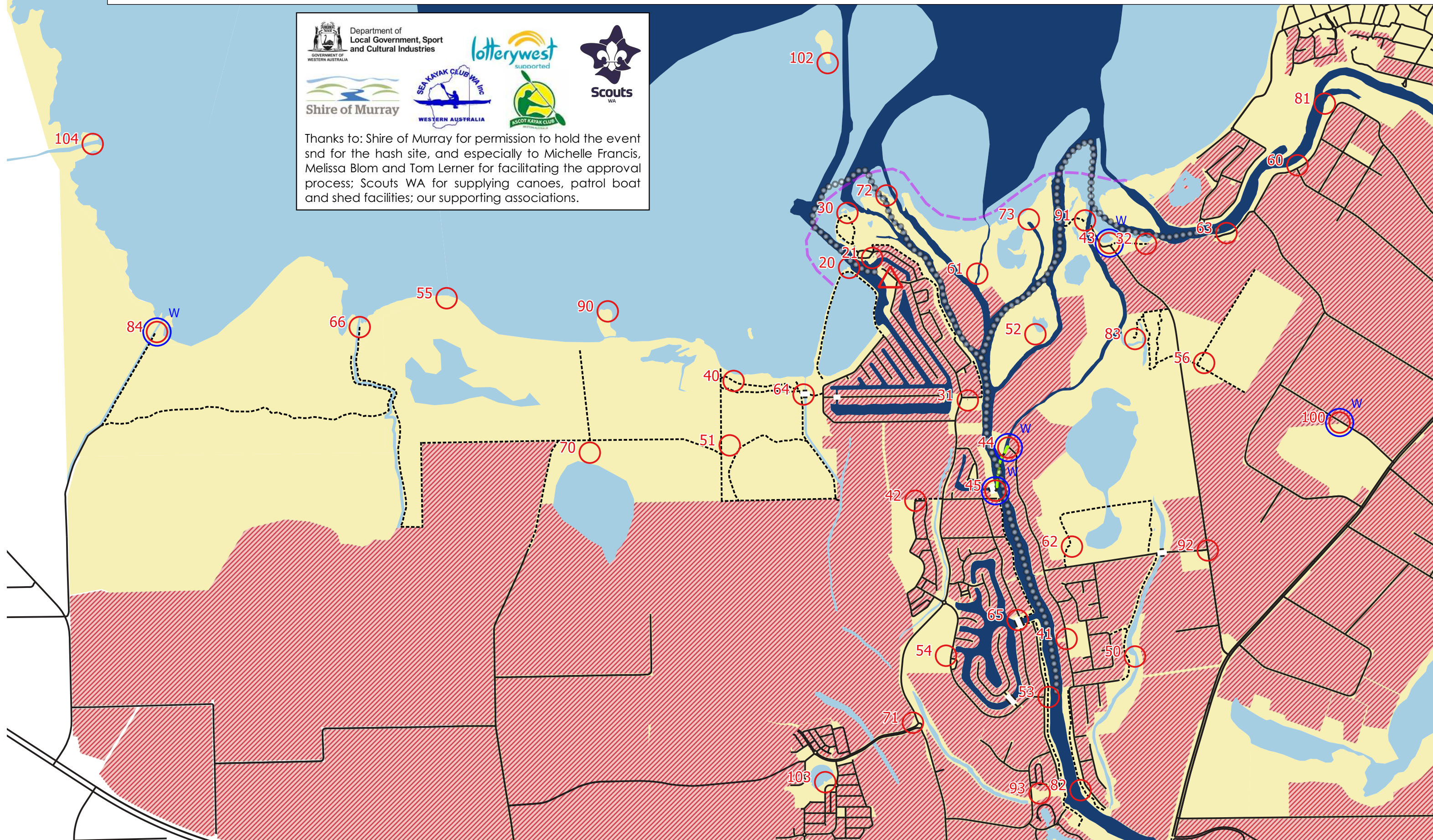
Scouts  
 WA

Shire of Murray

SEA KAYAK CLUB WA Inc  
 WESTERN AUSTRALIA

KSCOT KAYAK CLUB

Thanks to: Shire of Murray for permission to hold the event and for the hash site, and especially to Michelle Francis, Melissa Blom and Tom Lerner for facilitating the approval process; Scouts WA for supplying canoes, patrol boat and shed facilities; our supporting associations.





# THE RIVERS RUN THROUGH IT PADDLE-FOOT ROGAINE

## WARA 7 Hour Rogaine 12 February 2021

No.	Description	Points		No.	Description	Points	Important Information
							<b>Control Cards</b> From 0800 Saturday
20	The headland	20		60	Watercourse bend, swale 13m NE	60	
21	Scout shed	20		61	The island north side	60	
				62	A track, edge of the lake	60	<b>Briefing</b> 0945 Saturday
30	The headland	30		63	A beach, 63m @ 125deg	60	
31	The toilet block, 35m E	30		64	South end of the bridge, 12m E	60	
32	End of the track	30		65	The bridge, west end (under)	60	<b>Start</b> 1000 Saturday
				66	North side of the channel, track end	60	
40	The track	40					
41	The road / track junction, 24m @ 300deg	40		70	Edge of the lake (track junction, 92m E)	70	<b>Finish</b> 1700 Saturday
42	The road bend	40		71	Bank, south west side	70	
43	The beach west of road / track junction	40		72	The isthmus	70	
44	A boat ramp	40		73	The isthmus	70	<b>Hash House</b> Opens 1630 Saturday Closes 1800 Saturday
45	Public jetty, west end	40					
				81	A jetty, 10m @ 10deg	80	
50	The watercourse bend	50		82	The watercourse bend, north side	80	
51	A bend in a watercourse	50		83	A broad knoll	80	<b>Controls Used</b> 41
52	Edge of the lake	50		84	The track, north side of the watercourse	80	<b>Total Points</b> 2500
53	The road junction, 26m @ 0deg	50					
54	An oval, 56m @ 85deg	50		90	The promontory	90	<b>Low Tide</b> 0557 0.12 m
55	A track over a broad knoll	50		91	The windmill, 21m E	90	
56	A broad ridge	50		92	The road junction, 56m @ 120deg	90	<b>High Tide</b> 1934 0.53 m
				93	A drain, west side	90	
				100	The road, 30m at 170deg	100	<b>Patrolled Waterways</b> shown as grey dots on the map
				102	East end of the sand island	100	
				103	A viewing platform, 23m @ 25deg	100	
				104	The watercourse, east bank	100	

Team Number			Classification		Category	
41	42	53	60	82	102	103