

Quinny Escape - WARA Spring 12 Hour

WA.rogaine.asn.au

16 October 2021



SETTERS AND VETTERS

Paul Szijarto Colin Kelly
Jim Langford Alan Kelly

WARA acknowledges the Traditional Owners of the land we are rogaining on today and would like to pay our respects to Elders past, present and emerging.

Thanks and Appreciation to

Max Cowcher and family for access to their land and the Hash House site

Notes

The Quindanning Darkan road is narrow and carries fast moving traffic. It is not safe for pedestrian traffic. Do not use it to access any part of the course. It will not be patrolled.

All cropped areas are out-of-bounds

The State Government through the Department of Local Government, Sport and Cultural Industries and Lotterywest is a major supporter of Rogaining in Western Australia. Sport and recreation builds stronger, healthier, happier and safer communities.



Department of
**Local Government, Sport
and Cultural Industries**



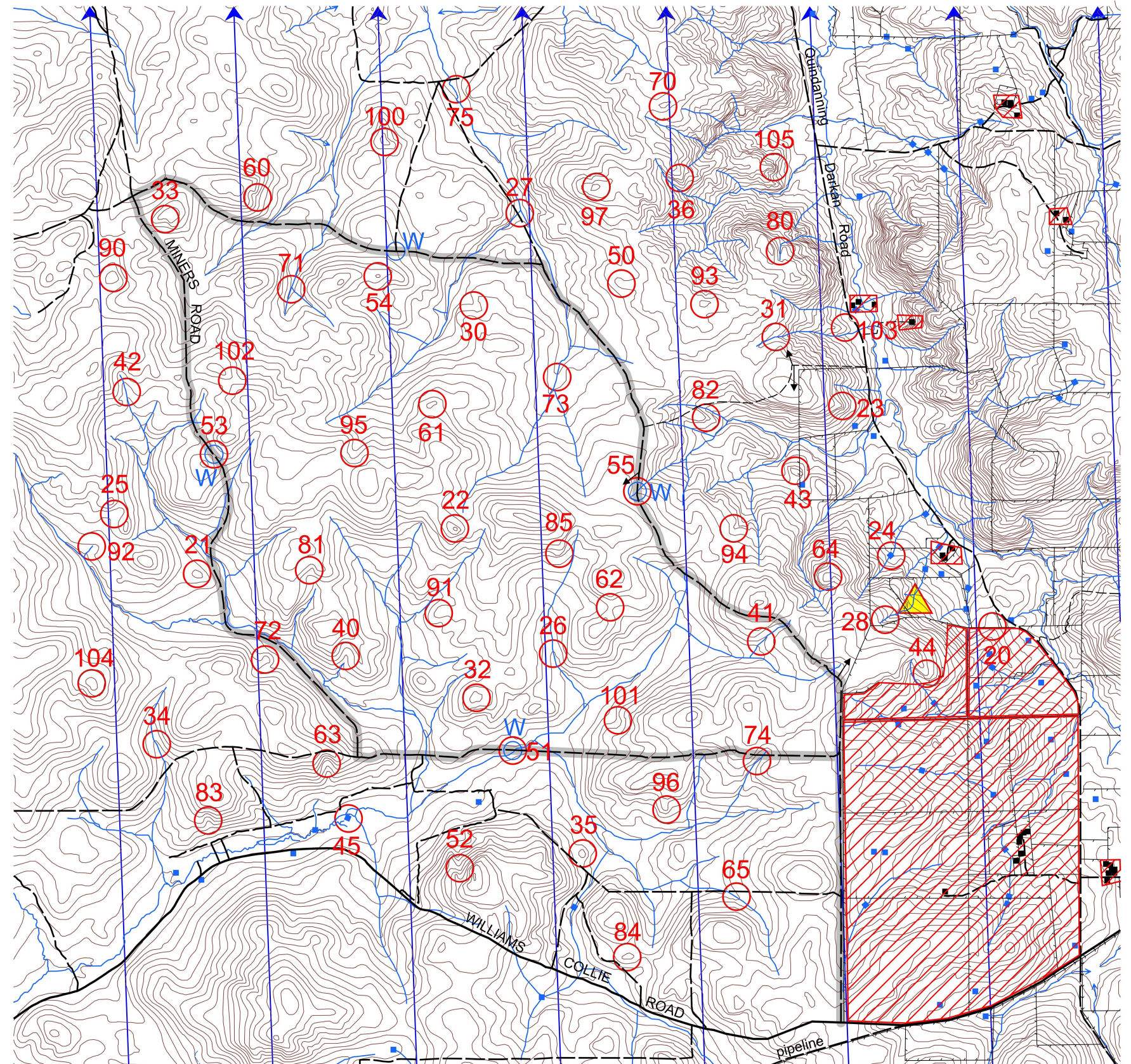
**Emergency Contact
Satellite Phone
+881 622 449 700**

This map was produced using Open Orienteering Mapper 0.9.5 by the Western Australian Rogaining Association, wa.rogaine.asn.au. Data supplied by Landgate and used under copy licence 393/93. Possession of this map does not give right of entry to this area.

0 1km 2km 3km
SCALE 1:50,000 – 5 metre contour interval

LEGEND

Building, Tank	■ •
Continuation	— — — — —
Contours	⊂ ⊃
Control	○ 70
Dam	■
Drain	— — — — —
Fenceline	— — — — —
Hash House	▲
Magnetic North Line	↑
Out of Bounds	▨
Patrolled Road	— — — — —
Pipeline	— — — — —
Railway, Abandoned	— — — — —
Road, Bitumen	— — — — —
Road, Major Gravel	— — — — —
Road, Minor Gravel	— — — — —
Swamp	▨
Watercourse	— — — — —
Water Drop	○ ○ W



WARA Quinny Escape Spring Rogaine 16 October 2021

Control Number	Description	Points
20	The Spur	20
21	The Knoll	20
22	The Knoll	20
23	The Spur	20
24	The Dam	20
25	The Gully	20
26	The Watercourse	20
27	The Track Watercourse Junction	20
28	The Watercourse	20
30	The Gully	30
31	The Watercourse	30
32	The Knoll	30
33	The Gully	30
34	The Watercourse	30
35	The Knoll	30
36	The Spur	30
40	The Gully	40
41	The Watercourse	40
42	The Watercourse	40
43	The Knoll	40
44	The Spur	40
45	The Dam, SW Corner	40
50	The Spur	50
51	The Track Creek Crossing	50
52	The Gully	50
53	The Saddle	50
54	The Knoll	50
55	The Track Watercourse Junction	50
60	The Gully	60
61	The knoll	60

Control Number	Description	Points
62	The Saddle	60
63	The Gully	60
64	The Knoll	60
65	The Watercourse	60
70	The Knoll	70
71	The Watercourse Junction	70
72	A Knoll	70
73	The Watercourse	70
74	The Watercourse	70
75	The Watercourse	70
80	The Watercourse	80
81	The Gully	80
82	The Spur	80
83	The Gully	80
84	The Knoll	80
85	The Spur	80
90	The Knoll	90
91	The Spur	90
92	The Watercourse	90
93	The Knoll	90
94	The Gully	90
95	The Gully	90
96	The Spur	90
97	The knoll	90
100	The Knoll	100
101	The Gully	100
102	The Saddle	100
103	The Spur	100
104	The Knoll	100
105	The Spur	100

Start time

10:00am Saturday

Finish time

10:00pm Saturday

Late Penalty

10 points per minute
or part minute

You will be LATE (no points)
if later than 10:30pm

Hash House opens

17:00 Saturday

Hash House closes

23:00 Saturday

Sunday breakfast

7:30 to 9:30

Sun set 6:27pm

Moon set 3:58am

Controls used 60

Total points 3510

Remember

Leave your safety card
with Admin when in camp
and when finished

Patrolled roads and water drops are indicated on the map

If you are injured or unable to continue go to a patrolled road or water drop and wait.

Do not walk across cropped areas, go around.