

ROK NESS REVENGE



Western Australian
Rogaining Association.
PO Box 1201 Subiaco.
WA 6904

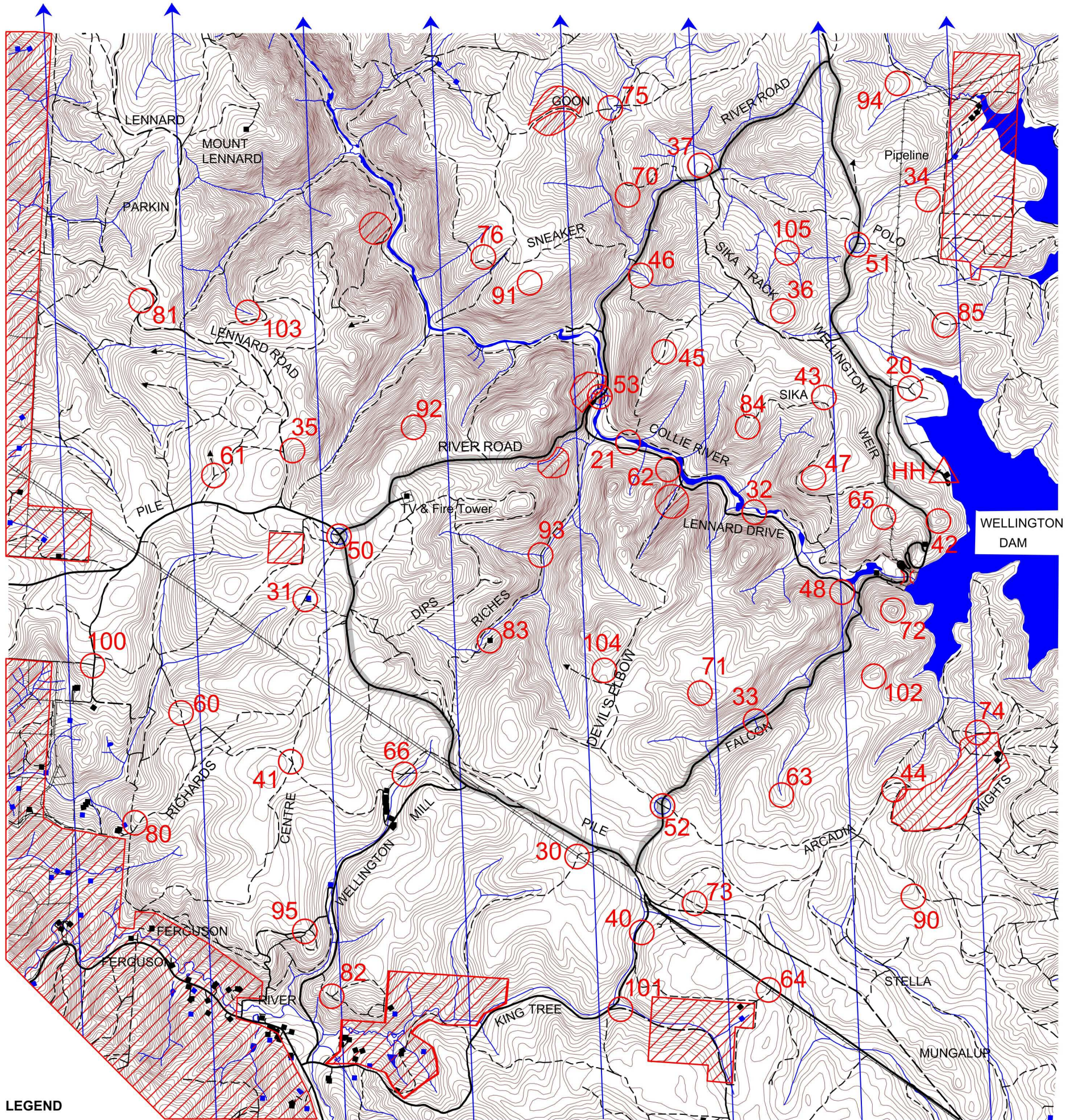
wa.rogaine.asn.au

WARA 24 HOUR ROGAINE - 21st & 22nd August 2021
INCORPORATING THE 2021 STATE CHAMPIONSHIPS

SETTERS
Ross Taplin
Ken Harrison

VETTERS
Jon Bayley
Susan Woodbridge

Emergency contact
Satellite Phone
+8816 2244 9701



LEGEND

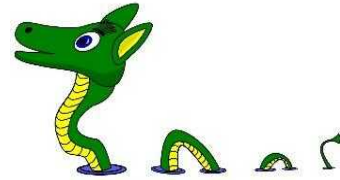
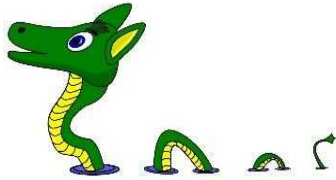
- | | | | |
|--|--|---|--|
| Powerline | | Patrolled Road | |
| Pipeline | | Plantation | |
| Building | | Control | |
| Contours | | Hash House | |
| Dams | | Water Drop | |
| Fence Line | | Out of Bounds | |
| Magnetic North Line | | Collie River Crossing Point | |
| Watercourse | | The Collie River may only be crossed at the marked crossing points. | |
| Road - Bitumen | | | |
| Road - Major Gravel | | | |
| Road or Track - Minor (May be overgrown or non-existent) | | | |
| Road or Track continues | | | |

SCALE 1:50,000, 5 metre contour interval



Department of Sport and Recreation

SPECIAL THANKS TO
Leon Price and Nick Evans of DBCA.



ROK NESS REVENGE

CONTROL FEATURES AND EVENT TIMES

Number	Feature	Number	Feature
20	Track junction	65	Spur
21	River bank, south side	66	Power pole, south of track junction
30	Power line - track junction	70	Spur
31	Dam, south side	71	Broad spur
32	River bank, south side	72	Knoll
33	Watercourse	73	Highest point of track
34	Broad spur	74	Spur
35	Broad gully	75	The western track- creek junction
36	Broad knoll	76	Spur
37	Clearing, eastern edge	80	Broad spur
40	Small rocky outcrop	81	Broad gully
41	Northern track junction, then 50m@85 deg	82	Track junction
42	Knoll	83	Nglang Boodja hut, then 10m @ 90deg
43	Saddle	84	Knoll
44	Spur	85	High point of track, then 20m @180deg
45	Highest point on track	90	Spur
46	Watercourse	91	Broad knoll
47	Knoll	92	Spur
48	Rocky outcrop	93	Track - creek junction
50W	Road junction, then 30m @270deg	94	Broad spur
51W	Road - track junction, then 30m @ 90deg	95	Track junction
52W	Road - track junction, then 30m@140deg	100	Track junction
53W	Bridge, southern end	101	Broad track bend
60	Gully, upstream of a small pond	102	Knoll
61	Track junction, then 50m @ 290deg	103	Watercourse
62	Top of rocky outcrop	104	Saddle
63	Watercourse	105	Watercourse junction
64	Road - track junction, then 30m @ 240deg	HH	Administration tent

Time	Event
Saturday 9.00 am	Maps available at Administration tent
Saturday 12 noon	Rogaine commences
Saturday 4.00 pm	Fruit available at water drops
Saturday 5.00 pm	Hash House opens
Saturday 4.43 pm	Moonrises
Saturday 5.00 pm	Hash House opens
Saturday 5.50 pm	Sun sets
Sunday 6.43 am	Moon sets
Sunday 6.51 am	Sun rises
Sunday 12 noon	Rogaine closes
Sunday 12.45 pm	Hash House closes