

The Grand Old Duke Rogaine

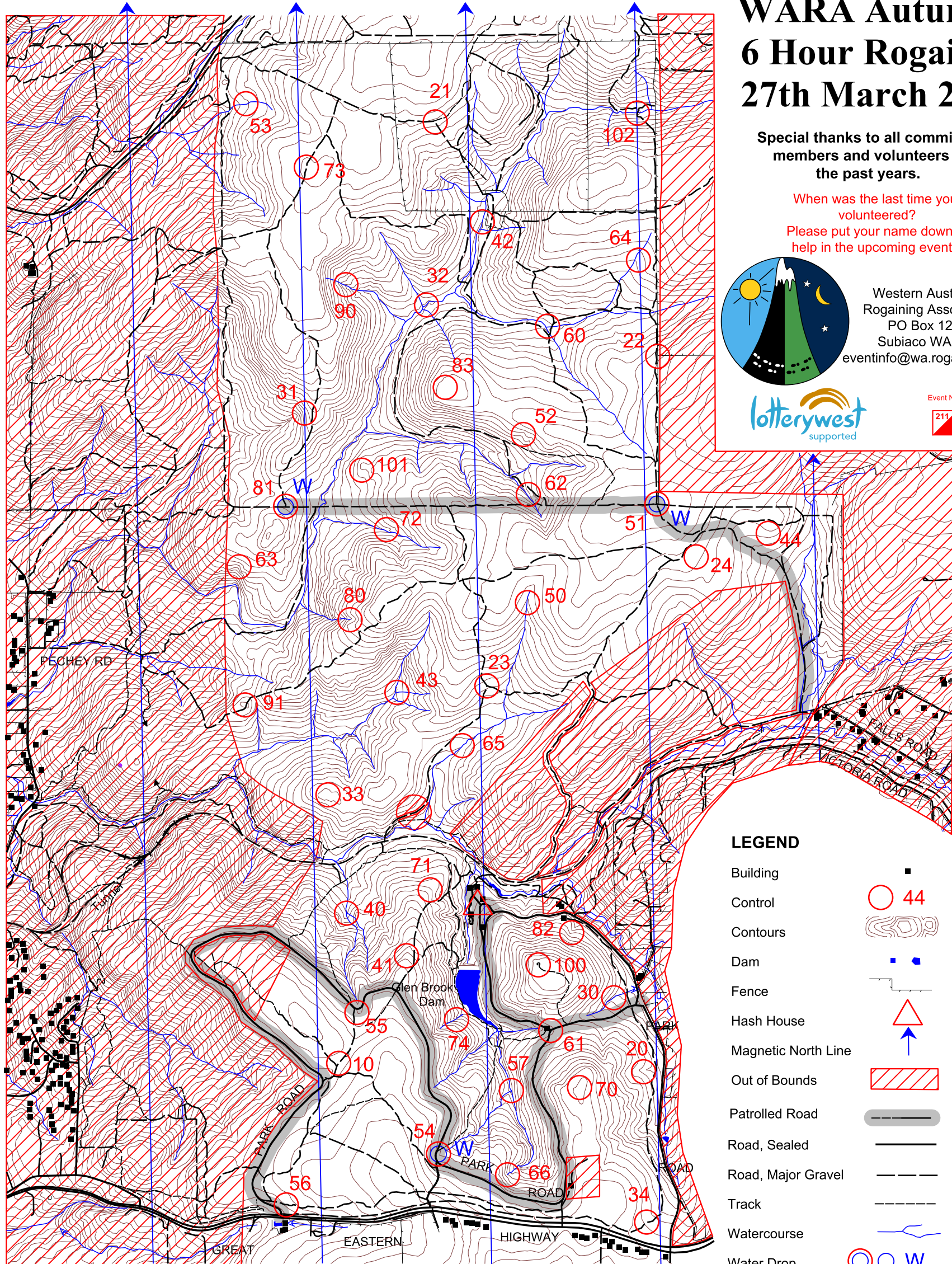
WARA Autumn 6 Hour Rogaine 27th March 2021

Special thanks to all committee members and volunteers of the past years.

When was the last time you volunteered?
Please put your name down to help in the upcoming events.



Western Australian Rogaining Association,
PO Box 1201,
Subiaco WA 6904
eventinfo@wa.rogaine.asn.au



LEGEND

Building	■
Control	○ 44
Contours	
Dam	■ ■
Fence	— — — —
Hash House	△
Magnetic North Line	↑
Out of Bounds	
Patrolled Road	— — — —
Road, Sealed	— — — —
Road, Major Gravel	— — — —
Track	— — — —
Watercourse	
Water Drop	○ ○ W

SETTERS

Ignatius Johnston
Camillus Johnston
Paul Johnston

VETTERS

John Herzfeld
Elena Ghergori

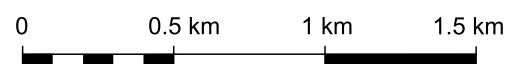


Department of
Sport and Recreation



**PARKS AND
WILDLIFE
SERVICE**

SCALE 1:25,000, 5 metre contour interval



Emergency contact Satellite Phone +8816 2244 9700

Paul's Mobile Number 0468 380 912

This map was produced using OOMAPPER 0.9.4 by the Western Australian Rogaining Association, wa.rogaine.asn.au. Data supplied by DOLA and used under copy licence 393/93. Possession of this map does not give right of entry to this area.

"The Grand Old Duke Rogaine" WARA Autumn 6hr, 27 March 2021

Control	Description	Points	Control	Description	Points	Important information	
10	The Track junction	10	63	The Gully	60	Safety cards, maps and wrist tags	
			64	The Broad Gully	60	Available from 1pm Saturday	
20	A Watercourse	20	65	The Watercourse	60		
21	The Track Junction	20	66	The Watercourse	60	Novice briefing	
22	The Fence Junction 60m @ 250 deg	20				2 PM Saturday	
23	The Track Junction 30m @ 10 deg	20	70	The Knoll	70		
24	The Broad Spur	20	71	The Spur	70	Briefing	
			72	A Watercourse Junction	70	2:45 PM Saturday	
30	The Watercourse	30	73	The Track	70		
31	Head of the Gully	30	74	The Watercorpse	70	Start	Finish
32	The Watercourse Junction	30				3:00 PM	9:00 PM
33	The Knoll	30	80	The Gully	80		
34	The Track	30	81W	The Track Junction 30m @ 340 deg	80	Sunset	
			82	Head of the Gully	80	6:19 PM	
40	The Watercourse Junction	40	83	The Broad knoll	80		
41	The Spur	40				Moonrise	Moonset
42	The Watercourse	40	90	The Watercourse	90	5:44 PM	5:27 AM Sunday
43	The Watercourse Junction	40	91	The Knoll	90		
44	The Spur	40				Late Penalty	
			100	The Knoll	100	10 points per minute or part minute	
50	The Gully	50	101	The Spur	100	LATE (no points) after 9:30pm	
51W	The Track intersection 70m @ 210 deg	50	102	The Watercourse Track Junction	100		
52	The Gully	50				Controls used	Total points
53	The Watercourse	50				45	2430
54W	The Road Bend	50					
55	The Road Junction	50				Water drops at controls: 51, 54 and 81	
56	The Track	50					
57	The Watercourse junction	50					
60	The Watercourse	60				If you are injured make your way to a patrolled road or a water drop and wait there for help.	
61	The Road Junction 60m @ 150 deg	60					
62	A Watercourse Junction	60					