

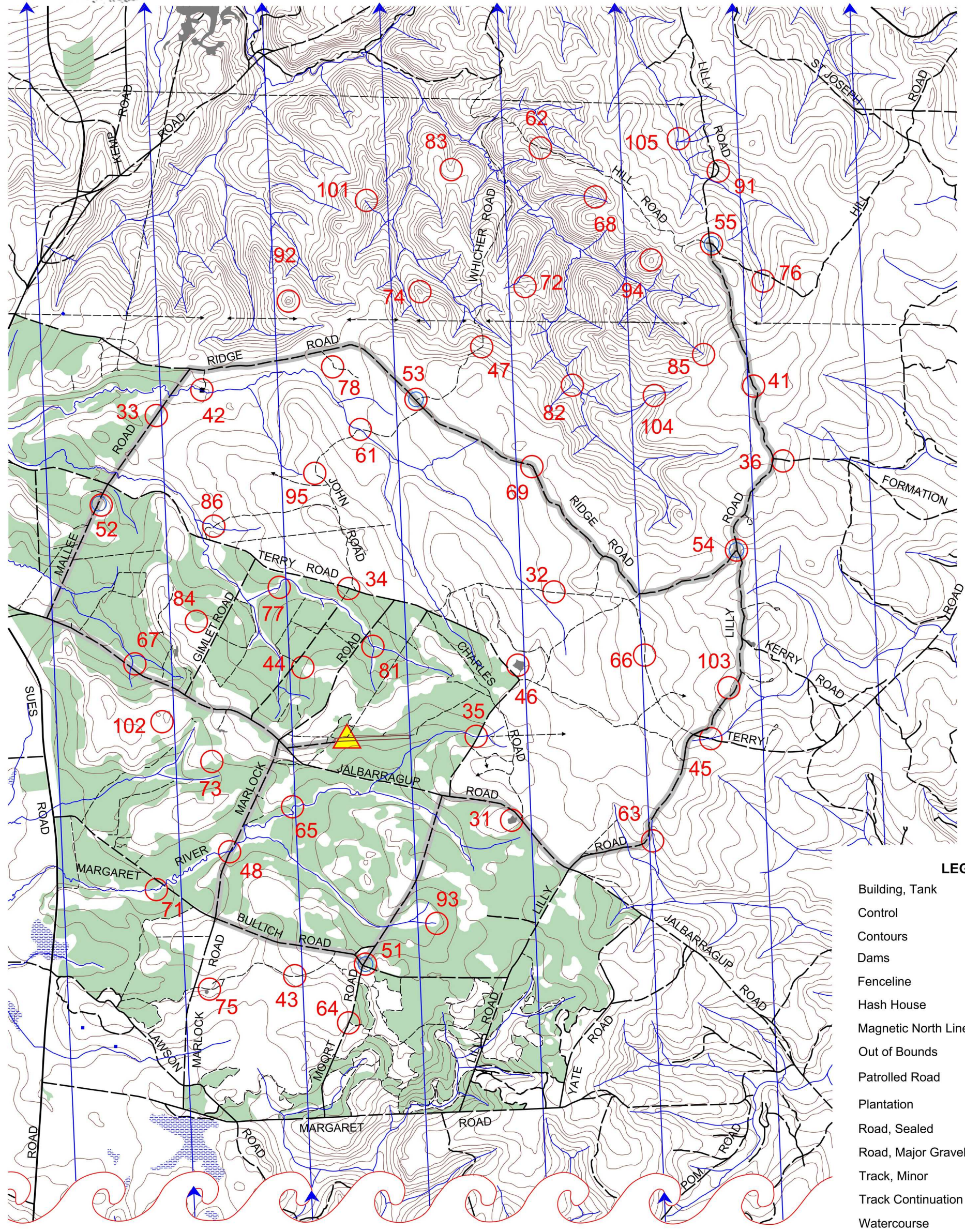


# 2021 USD Rogaine



## The Surf's Up...side Down Rogaine

Event No. 210



### Setters & Veters

Grant Pepper  
David Symons  
Steve Myers

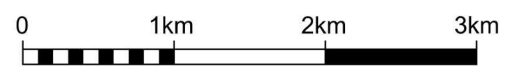
### Thanks and Appreciation to

Gilbert Stokman (DBCA)

**Emergency contact Satellite Phone +8816 2244 9700**

### LEGEND

- Building, Tank
- Control
- Contours
- Dams
- Fenceline
- Hash House
- Magnetic North Line
- Out of Bounds
- Patrolled Road
- Plantation
- Road, Sealed
- Road, Major Gravel
- Track, Minor
- Track Continuation
- Watercourse
- Waterdrop



SCALE 1:50 000  
5 metre contour interval



Western Australian Rogaining Association Inc.  
PO Box 1201, Subiaco WA 6904  
eventinfo@wa.rogaine.asn.au

This map was produced using OOMAPPER 0.9.3 by the Western Australian Rogaining Association, wa.rogaine.asn.au. Data supplied by DOLA and used under copy licence 393/93. Possession of this map does not give right of entry to this area.



# The Surf's Up... Side Down Rogaine: 20th & 21st of February 2021

No.	Description	Points	No.	Description	Points	Important Information
31	Re-Vegetated Gravel Pit	30	71	The Watercourse – Margaret River	70	
32	The Track	30	72	The Gully	70	
33	A Road Track Intersection	30	73	A Track Bend (Plantation Boundary)	70	
34	The Road, Track Intersection	30	74	The Small Knoll	70	
35	The Watercourse	30	75	The Track	70	
36	The Track	30	76	The Watercourse	70	
			77	The Watercourse Bend	70	<b>Finish</b> 08:00 Sunday
			78	The Track Bend	70	
						<b>Late Penalty</b> 10 points per minute or part minute All points after 30 minutes
41	The Track, High Point	40	81	The Watercourse Junction	80	
42	Man-Made Structure	40	82	The Watercourse Junction	80	
43	The Track	40	83	The Gully	80	
44	A Track Intersection	40	84	A Track Bend (Plantation Boundary)	80	
45	Road, Watercourse Junction	40	85	Head of The Watercourse	80	<b>Hash House</b> 06:00 Sunday
46	The Quarry	40	86	The Track Watercourse Junction	80	
47	Whicher Road, The Bend	40				
48	Watercourse, Road Junction (Careful Not To Wake The Troll...)	40				
51	Track Intersection, 40m @ 60 degrees, WATER DROP	50	91	The Track Bend	90	
52	The Broad Knoll, WATER DROP	50	92	The Knoll	90	
53	Road Track Intersection, WATER DROP	50	93	A Dam	90	
54	Road Intersection, 20m @ 90 degrees, WATER DROP	50	94	The Knoll	90	
55	Road Intersection, WATER DROP	50	95	The Track Bend	90	
61	The Track Watercourse Junction	60	101	Head of The Watercourse	100	Sunset - 19:05 hrs
62	Hill Road	60	102	Centre of Diggings (Three VERY small gravel pits)	100	
63	The Watercourse	60	103	A Tree in Area of Low Scrub	100	Moonset - 23:53 hrs
64	Track / Plantation Boundary	60	104	A Watercourse Bend	100	
65	The Watercourse	60	105	The Watercourse	100	Sunrise - 05:59 hrs
66	The Track	60				
67	A Track Intersection	60				
68	The Watercourse	60				
69	The Track Bend, Ridge Road	60				

## Patrolled Roads:

As highlighted, includes Marlock, Bullich, Moort, Jalbarragup, Lilly, Ridge, Mallee and Jalbarragup again.

## Water Drops at or near Controls:

51, 52, 53, 54 and 55.

## Notes:

- There are unmarked tracks bordering most areas of pine plantation as shown on map.
- Some of these areas may have been logged or are at various stages of regrowth.
- While we have attempted to update all tracks accurately, keep in mind that there may be some unmarked tracks, and some marked tracks that have become overgrown.
- If you encounter Apiary sites (bee hives) please keep a distance of 200m from them.

**Emergency Contact Number:**  
**+8816 2244 9700**

## Controls Used

52

## Total Points

3280