



Déjà View Rogaine

WARA Spring 24 Hour Rogaine State Championships 8th & 9th August 2009
Incorporating the Paddy Pallin 6 hour Schools Championships.



0 1km 2km 3km
SCALE 1:50,000, 5 metre contour interval

Setters and Veters

David Muir
Tony Bart
Chris Reid
Patrick Tremlett
Ashley Carruthers
Max Van Weert

Thanks to the Farmers

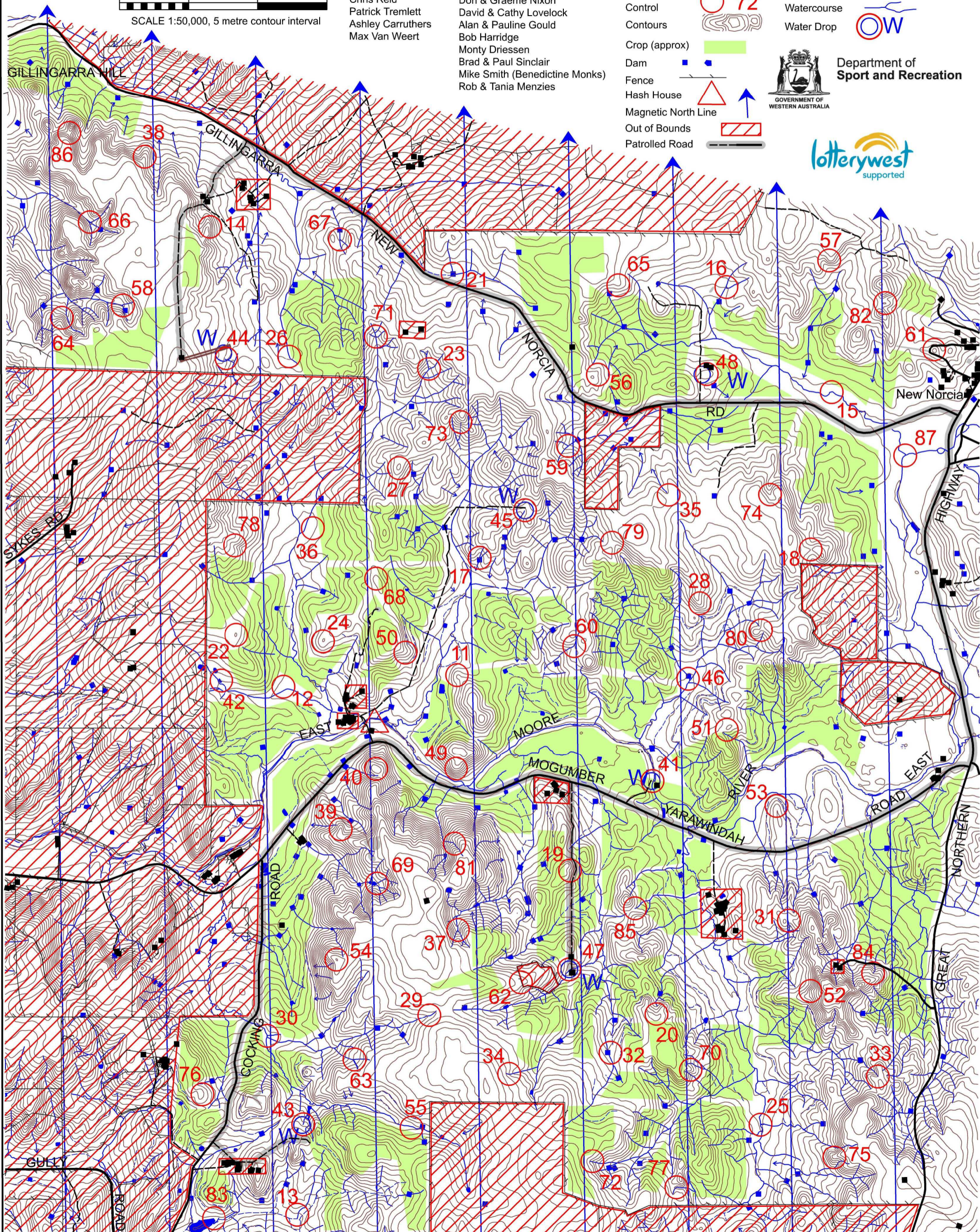
Bill Cocking (Hash House Site)
Don & Leon Cocking
Don & Graeme Nixon
David & Cathy Lovelock
Alan & Pauline Gould
Bob Harridge
Monty Driessen
Brad & Paul Sinclair
Mike Smith (Benedictine Monks)
Rob & Tania Menzies

LEGEND

- Building
- Continuations
- Control
- Contours
- Crop (approx)
- Dam
- Fence
- Hash House
- Magnetic North Line
- Out of Bounds
- Patrolled Road
- Road, Sealed
- Road, Minor Gravel
- Watercourse
- Water Drop



Department of Sport and Recreation



WARA State Championships 24 Hour Rogaine, 8 & 9 August 2009

No.	Description	points	No.	Description	points	Important Information
11	A rocky knoll	10	49	The spur, 60 m south of vegetation boundary	40	Control Cards From 1130 Saturday
12	A fence corner	10	50	The rocky spur	50	
13	A fence corner	10	51	The knoll	50	Briefing 1145 Saturday
14	The rocky spur/breakaway	10	52	A small rocky spur	50	
15	The stream bend, south side	10	53	The spur	50	Start 1200 Saturday
16	The watercourse junction	10	54	The rocky summit	50	
17	The dam, north side	10	55	A windmill	50	Finish 1200 Sunday
18	The eastern saddle	10	56	A minor watercourse, head of	50	
19	The gully	10	57	The spur	50	Hash House Opens at 1600 Sat Closes by 1300 Sun
20	The watercourse, head of	20	58	The watercourse junction	50	
21	The broken dam, south side	20	59	The watercourse junction	50	Sunset 1745 Saturday
22	The broad knoll	20	60	The watercourse, bend	60	
23	The watercourse junction	20	61	Rocky summit	60	Moonrise 1952 Saturday
24	The knoll	20	62	The spur	60	
25	The watercourse/fence junction	20	63	The watercourse junction	60	Sunrise 0656 Sunday
26	The watercourse bend	20	64	A rocky spur	60	
27	The knoll	20	65	A small gully head of	60	Moonset 0754 Sunday
28	The spur	20	66	The watercourse junction	60	
29	The watercourse, a track crossing	20	67	The watercourse junction	60	Late Penalty 10 points per minute or part minute.
30	The watercourse junction	30	68	The knoll,	60	
31	The head of the watercourse	30	69	The top dam, east side	60	LATE (no points) later than 1230 Sunday
32	The dam, east side	30	70	The spur	70	
33	The watercourse, head of	30	71	The southern watercourse junction	70	Controls Used 77
34	The watercourse, head of	30	72	The watercourse, head of	70	
35	The watercourse, head of	30	73	The eastern watercourse, head of	70	Total Points 3430
36	Derelect tank beside well (beware !!)	30	74	The gully - on a track crossing	70	
37	The watercourse junction	30	75	The spur	70	Water Drops: At Controls 41, 43,44, 45,47,48 If you are injured, make your way to a water drop or a patrolled road and wait.
38	The spur	30	76	A knoll	70	
39	The rocky spur	30	77	A western watercourse junction	70	Patrolled Roads. See roads indicated on the map: Mogumber Yarawindah Rd, Gillingarra New Norcia Rd, Cocking Rd, Gt. Northern Hwy
40	The rocky knoll	40	78	The gully	70	
41	The track/river crossing , south side. Caution [water]	40	79	The saddle	70	
42	The south eastern dam (breached) - north side	40	80	The eastern saddle	80	
43	The south western watercourse, head of [Water 20m SW on fence]	40	81	The southern watercourse, a bend	80	
44	A minor watercourse junction [Water 50m NW on edge of airstrip]	40	82	The rocky knoll	80	
45	The watercourse, head of , [Water]	40	83	The dam NE corner	80	
46	The dam, southern side	40	84	The watercourse, head of	80	
47	The track,watercourse crossing [water]	40	85	The watercourse, head of	80	
48	The knoll [water on track]	40	86	The southern saddle	80	
			87	The stream junction, SW side	80	