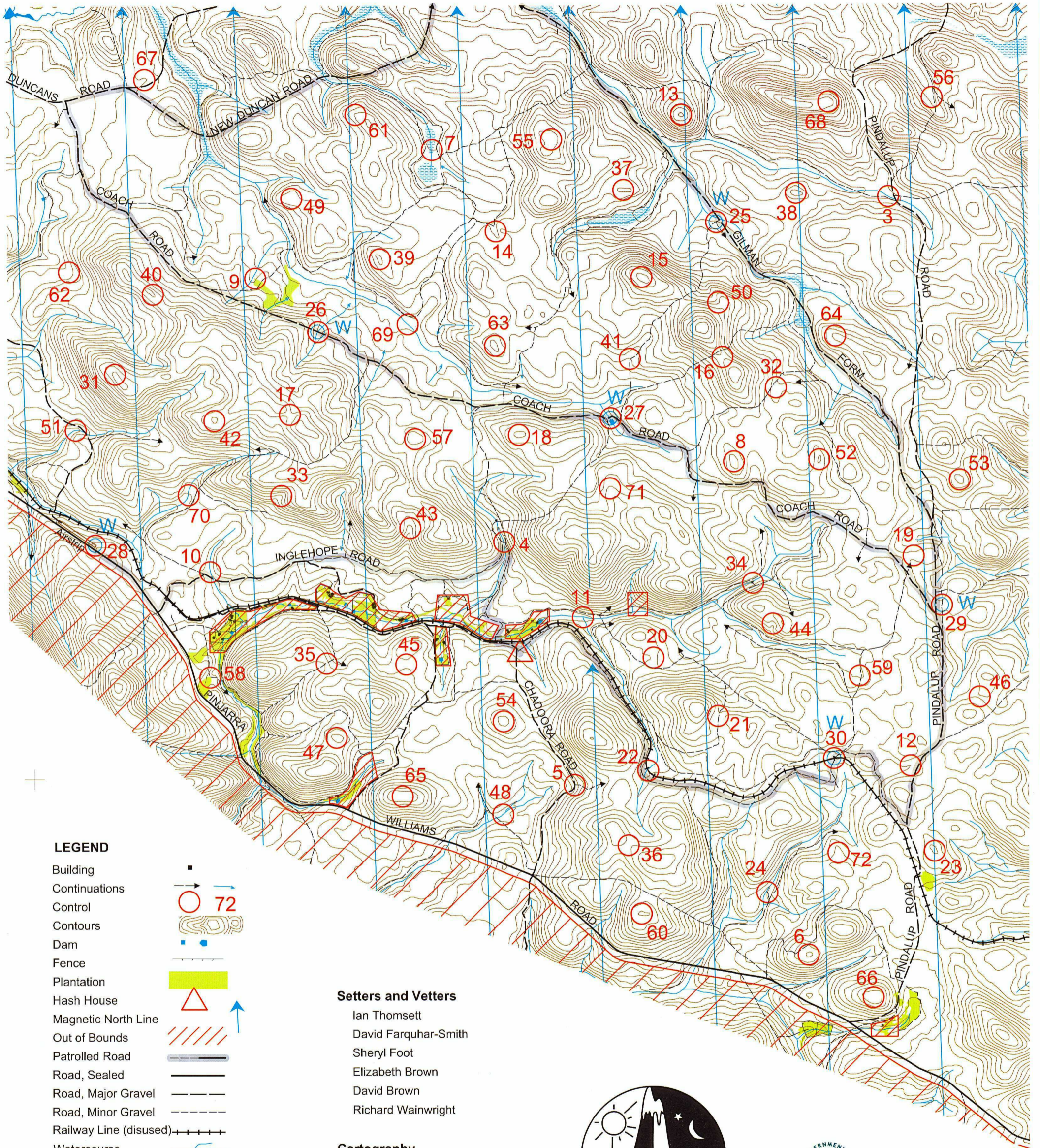


# The Chadora Explora Rogaine

WARA Spring 12 Hour Rogaine - October 27 2007

Western Australian Rogaining Association, PO BOX 1201, Subiaco WA 6904



## LEGEND

- Building
- Continuations
- Control
- Contours
- Dam
- Fence
- Plantation
- Hash House
- Magnetic North Line
- Out of Bounds
- Patrolled Road
- Road, Sealed
- Road, Major Gravel
- Road, Minor Gravel
- Railway Line (disused)
- Watercourse
- Water Drop

## Setters and Vettors

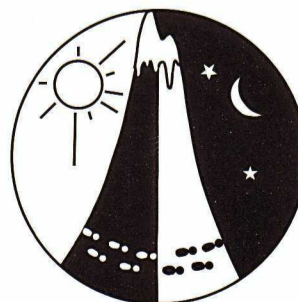
Ian Thomsett  
 David Farquhar-Smith  
 Sheryl Foot  
 Elizabeth Brown  
 David Brown  
 Richard Wainwright

## Cartography

David Brown

## Thanks to:

Jamie Ridley and Elisha Skillen  
 of DEC Mundaring District.



SCALE 1:50,000, 5 metre contour interval





# The Chadora Explora Rogaine. WARA's Spring 12hr Rogaine, 27th October 2007.

No.	Description	Points
-		
-		
3	The water course on a bend	20
4	The track and water course junction	20
5	The road and track junction, 20m @ 100°	20
6	The knoll	20
7	The water course	30
8	The broad knoll	30
9	The plantation, north west corner	30
10	The water course	30
11	The water course junction	30
12	The gully	30
13	The knoll	40
14	The gully	40
15	The broad knoll	40
16	The saddle	40
17	The saddle	40
18	The broad knoll	40
19	A saddle	40
20	The broad saddle	40
21	The saddle	40
22	The railway line and water course junction	40
23	The knoll	40
24	The water course at a water gauging station, north side	40
25	The south west track junction (Water drop)	50
26	The road and water course junction, 20m @ 210° (Water drop 50m @ 120°)	50
27	The road and water course junction (Water drop)	50
28	The airstrip, south east end (Water drop)	50
29	The track and an old rail formation junction (Water drop)	50
30	The track and railway junction (Water drop)	50
31	The ridge, north west end	50
32	The gully	50
33	The gully	50
34	The water course at a water gauging station, south east side	50
35	The track, crest of	50
36	The broad saddle	50

No.	Description	Points
37	The knoll	60
38	The knoll	60
39	The knoll	60
40	The knoll, south east end	60
41	The track bend	60
42	The broad knoll	60
43	The gully	60
44	The gully	60
45	The broad saddle	60
46	The saddle	60
47	The knoll	60
48	The water course	60
49	A broad knoll	70
50	The shallow gully, head of	70
51	The water course	70
52	The knoll	70
53	The broad knoll	70
54	The broad knoll	70
55	The broad knoll	80
56	The shallow gully	80
57	The broad knoll	80
58	The plantation, north east corner	80
59	The gully, 10m north of an old well (CAUTION!)	80
60	The knoll	80
61	The broad spur	90
62	The gully	90
63	The knoll	90
64	The spur	90
65	The broad knoll	90
66	The broad knoll	90
67	The spur	100
68	The spur	100
69	The water course	100
70	The water course	100
71	The broad spur	100
72	A knoll	100

<u>Important Information</u>	
<u>Registration</u>	
From 07.00 hrs	
<u>Control Cards issued</u>	
From 09.30 hrs	
<u>Pre-event briefing commences</u>	
09.45 hrs	
<u>Event starts:</u>	
10.00 hrs	
<u>Event finishes:</u>	
12hrs later	
<u>Late penalties applied:</u>	
10 points per minute or part thereof.	
Disqualification occurs if more than 30 mins late.	
<u>Sunset</u>	
18.37 hrs	
<u>Moonrise</u>	
20.12 hrs	
<u>Hash House</u>	
Opens 16:00 Saturday WST	
Closes 23:00 Saturday WST	
Reopens for Breakfast 07:00 Sunday WDST	
Closes 09:00 Sunday WDST	
<u>Number of controls used</u>	
70	
<u>Total points</u>	
4100	
Points will be gained for mispunches only if you inform administration of the mistake immediately upon your return. If you have not queried your controls visited with administration within 30 minutes of the close of the event then your score will be finalised.	

In case of trouble/emergency please make your way to the nearest "water drop" or patrolled road". These are patrolled every 2 or 3 hours. Patrol cars are signed as "Rogaine" and have a green flashing light.

Patrolled Roads: Pinjarra-Williams Rd (part of), Inglehope Rd, Pindalup Rd, Gilman Formation, Coach Rd, New Duncan Rd. Water drops at or near controls: 25, 26, 27, 28, 29, 30.