

# The Twelfth Night

WARA Upside Down Rogaine  
 12 hours, 8:00 am to 8:00 pm  
 15/16 February, 2003

**SETTERS** Phil Dufty  
 Penny Dufty  
**VETTERS** Sandra Swain  
 Kerry Cowie

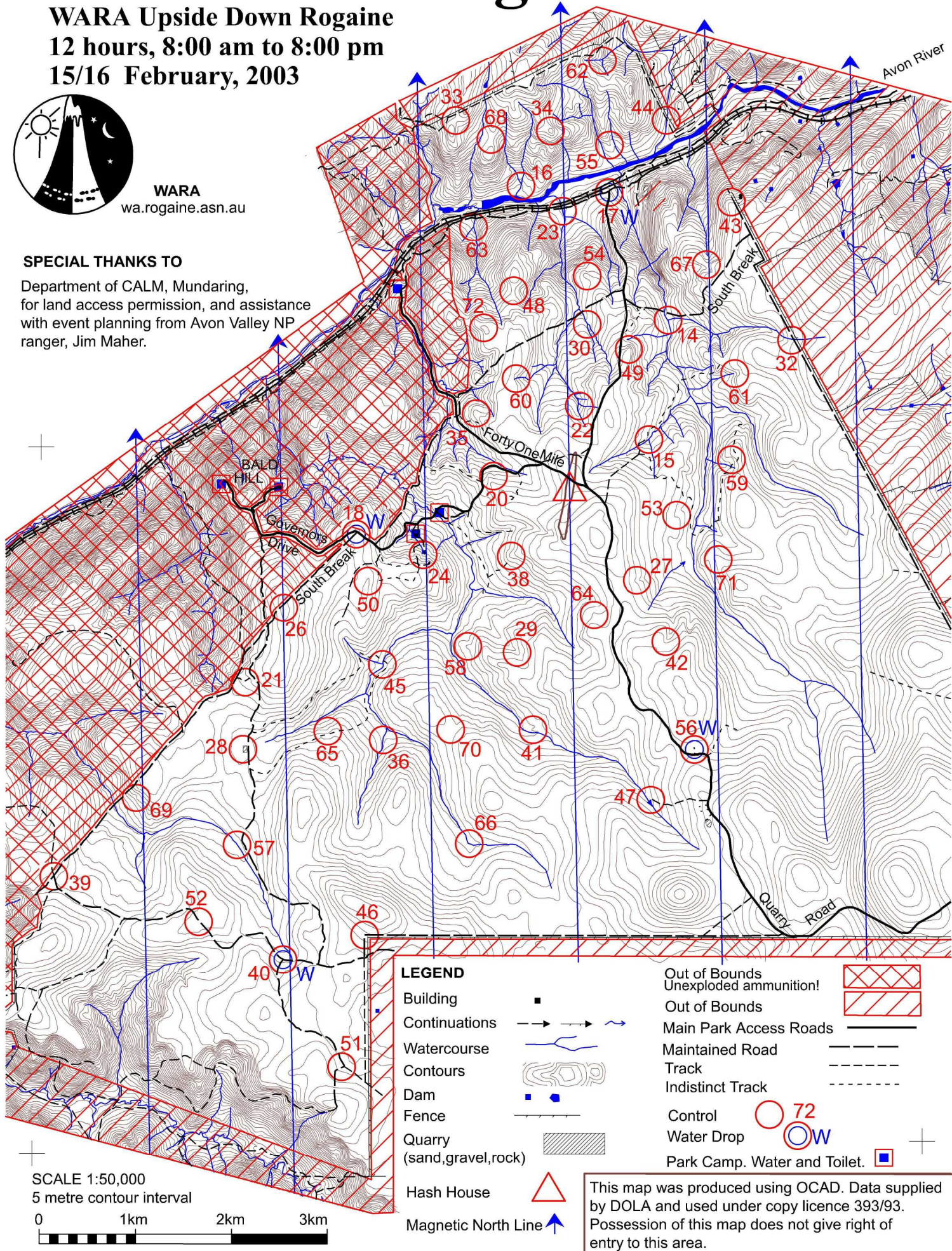
Final-4. 280103



**WARA**  
 wa.rogaine.asn.au

## SPECIAL THANKS TO

Department of CALM, Mundaring,  
 for land access permission, and assistance  
 with event planning from Avon Valley NP  
 ranger, Jim Maher.



### LEGEND

- |                                |       |   |    |
|--------------------------------|-------|---|----|
| Building                       | ■     | Out of Bounds<br>Unexploded ammunition! |    |
| Continuations                  | → → → | Out of Bounds                           |    |
| Watercourse                    |       | Main Park Access Roads                  |    |
| Contours                       |       | Maintained Road                         |    |
| Dam                            | ■     | Track                                   |    |
| Fence                          | — — — | Indistinct Track                        |    |
| Quarry<br>(sand, gravel, rock) |       | Control                                 | 72 |
| Hash House                     | △     | Water Drop                              | W  |
| Magnetic North Line            | ↑     | Park Camp. Water and Toilet.            | ■  |

SCALE 1:50,000  
 5 metre contour interval



This map was produced using OCAD. Data supplied  
 by DOLA and used under copy licence 393/93.  
 Possession of this map does not give right of  
 entry to this area.

## The Twelfth Night - WARA's 12 Hour Upside Down Rogaine, 15 & 16 February, 2003

No.	Description	Points	No.	Description	Points	Important information
			43	The spur. 10 m west of track.	60	
14	The watercourse junction. Overgrown.	30	44	The watercourse. South eastern channel, 10 m from track.	60	<b>Map Issue</b>
15	The watercourse junction	30	45	The watercourse junction. Rocky.	60	From 17:00 Sat
16	The watercourse junction	30	46	The track bend	60	<b>Novice Briefing</b>
17	The track junction. WATER	30	47	The dam. North East end of the dam wall	60	18:30 Sat.
18	The track junction. WATER	30	48	The saddle	60	<b>Control Cards</b>
						From 19:30 Sat.
			49	The spur	70	<b>Briefing</b>
20	The small gully.	40	50	The knoll. North end..	70	19:50 Sat.
21	The track bend	40	51	The track junction.	70	<b>Start</b>
22	The watercourse junction.	40	52	The spur/track crossing	70	20:00 Sat.
23	The watercourse. On a minor watercourse junction.	40	53	The gully	70	<b>Finish warnings</b>
24	The dam. South side.	40	54	The spur	70	7:50 and 7:55 Sun.
26	The broad summit. 30 m from track.	40	55	The spur. North side of a rock knoll.	80	<b>Finish</b>
27	Head of the gully	40	56	South East edge of 200 by 300 clearing. WATER	80	8:00 Sun.
28	The sand quarry. West side.	40	57	The watercourse.	80	
29	The gully	40	58	The spur. On a rocky knoll	80	<b>Hash House</b>
30	The watercourse junction	40	59	The small north eastern gully	80	Open 6:00 Sun.
			60	Head of the watercourse	80	Closed 9:30 Sun.
			61	The gully. On a watercourse junction.	90	<b>Astronomical</b>
32	The indistinct watercourse. 20 m west of track.	50	62	The watercourse junction	90	Sunset Saturday
33	The saddle	50	63	The watercourse junction	90	19:07
34	The knoll	50	64	The spur	90	Moonrise Saturday
35	The spur. BEWARE OF NEARBY ROOT PIT	50	65	The small gully.	90	18:16
36	The watercourse.	50	66	The broad watercourse bend.	90	Moonset Sunday
						4:39
			67	A saddle	100	Sunrise Sunday
38	The spur.	50	68	The saddle	100	5:55
39	The track crossing	50	69	Top of the small gully	100	
40	The track junction. WATER	50	70	The saddle	100	<b>Controls Used = 55</b>
41	The small spur.	50	71	The spur.	100	<b>Total Points = 3450</b>
42	The gully	50	72	The knoll	100	

**Water Controls:** 17, 18, 40, 56. Water is also at park camps.

**Road Patrol.** Quarry Road from 17 to 56. Forty One Mile Road. Governors Drive from HH to 18 and then along the road loop passing near controls 26, 21, 69, 39, 52, 40, 57, 28 and back to 26.

**Safety bearing:** Head for any patrolled road or to farmland boundary roads in the east and south and then follow boundaries to Quarry Road or east to the bitumen Morangup Road.

**Out-of-Bounds.** The out-of-bounds area in the north west has a risk of unexploded ammunition. Going through this areas on Forty One Mile Road is permitted but stay strictly to the road.

**Mapped Roads and Tracks.** All the mapped roads and tracks in the event area are present but may not exactly follow the mapped route, be wary of using bends for navigation.

The tracks mapped as indistinct will require concentration to follow in the dark. There are many unmapped remnants of tracks.

**Vegetation.** Vegetation in the event area is generally open with low or no undergrowth but there are patches of dense bushes and parrotbush. Parrot bush is dense on the fringes of the event area to the east and south. Stick to the tracks in these areas. Parrot bush is often densest along the road verges. Watercourses in the flatter areas can generally be followed without difficulty.

**Avon River.** The Avon River is not flowing but has some large pools. It is readily crossable at many points but take care or you may get wet.