

SETTERS
ALAN KERR, DAVE LONGMAN
DAVID SMITH

VETTERS
SUE & JACK DOWLING

THANKS TO CALM
& PRIVATE LAND
HOLDERS FOR
ALLOWING US TO
WALK OVER THEIR LAND



EMU LITTER

WINTER 1999

INCLUDING PADDY PALLIN 6HR SCHOOLS CHAMPS

Paddy Pallin



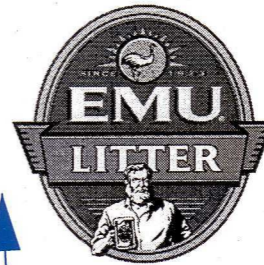
CONTOUR INTERVAL - 5 METERS

CONTOURS

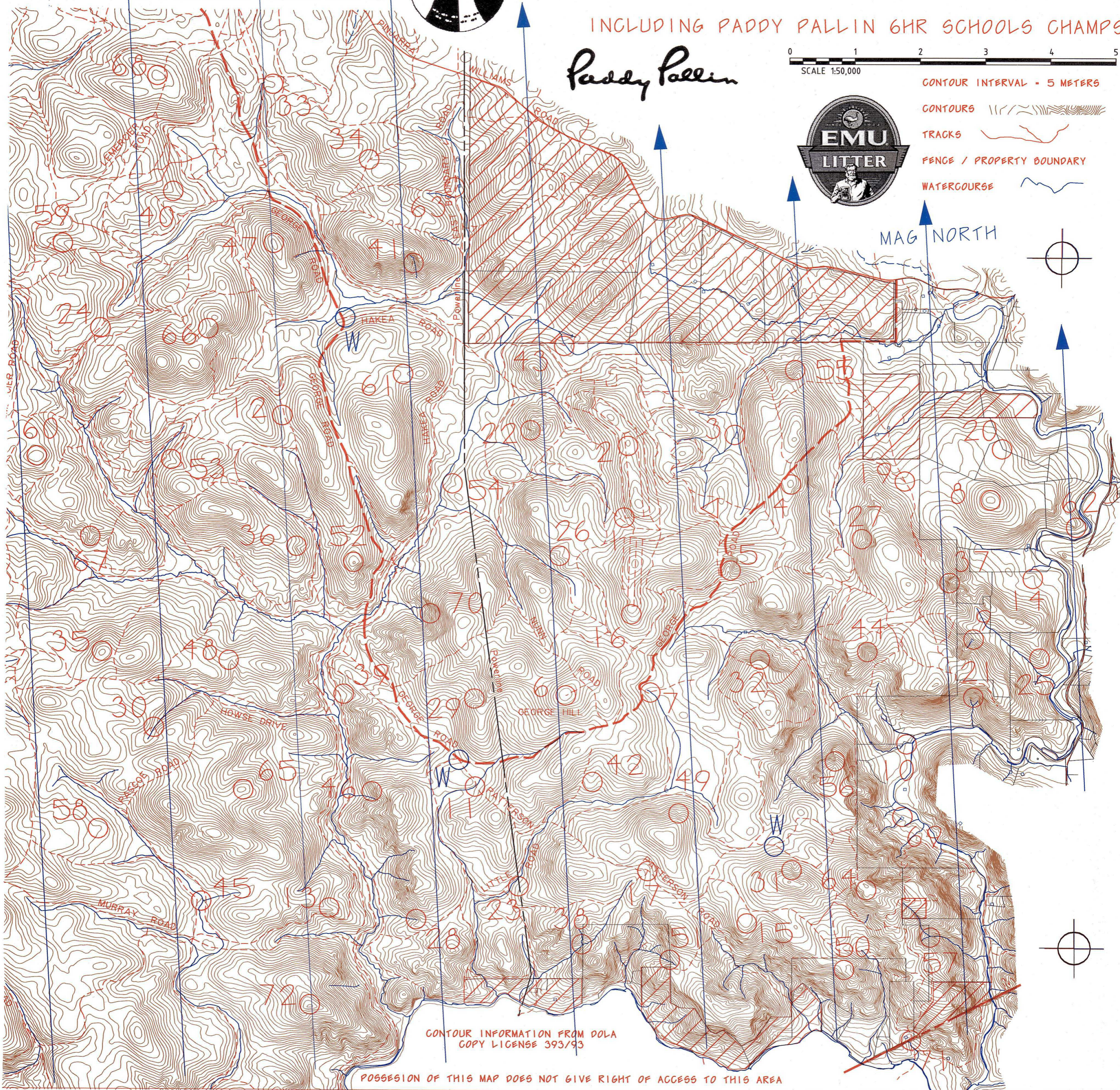
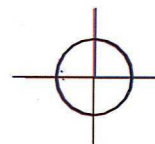
TRACKS

FENCE / PROPERTY BOUNDARY

WATERCOURSE



MAG NORTH



CONTOUR INFORMATION FROM DOLA
COPY LICENSE 393/93

POSSESSION OF THIS MAP DOES NOT GIVE RIGHT OF ACCESS TO THIS AREA

EMU LITTER Control description

24Hr Rogaine June 26/27 1999

NUMBER	DESCRIPTION	POINTS	NUMBER	DESCRIPTION	POINTS
1	The Track Bend	20	37	In the Gully	60
2	EUCALYPTUS CLADOCALX	20	38	The Fence & Watercourse intersection	60
3	The Watercourse Junction	20	39	A pine-scented Bath	60
4	The broad Summit	20	40	On the Spur	60
5	In the Gully	20	41	In a Bend in Black Pig Gully	60
6	Ruins (of a fire tower)	20	42	On the Spur	60
7	Fallen Log & Track	20			
8	The Summit & 140m @ 140 Deg	20	43	The Track & Watercourse intersection	70
9	Dam Wall - East End	20	44	In the Gully	70
10	The Watercourse	20	45	A Bend in the rocky Watercourse	70
11	The Track Bend & indistinct Watercourse	20	46	NE side of rocky Clearing	70
12	The Saddle	20	47	The Summit	70
			48	The Saddle	70
13	On the Spur	30	49	In the Grasstree Gully	70
14	A rocky Knoll	30	50	A Grasstree in Bracken	70
15	The broad Summit	30	51	The Fence & Watercourse Intersection	70
16	On the Spur	30	52	The Summit	70
17	The Track Junction	30	53	In the Gully mouth	70
18	** Not Used **		54	An Old Stump in the shallow Gully	70
19	The Track Junction	40	55	West side of the Spur	80
20	The Fence Corner & 100m @ 290 Deg	40	56	On the Spur	80
21	On the Spur	40	57	The Watercourse Junction	80
22	The rocky Bend in Piglets Gully	40	58	On the broad Spur	80
23	Pole 23B	40	59	In the Gully on a Rail Embankment	80
24	The Track & Saddle	40	60	The broad Summit	80
25	On the Spur	50	61	The broad Saddle	90
26	On the Spur	50	62	On the Spur	90
27	In the Gully	50	63	The Dam - East side	90
28	Head of the Gully	50	64	By 3m Rock Pile on the broad Summit - Enjoy the View	90
29	The Bend in the Gully	50	65	The Knoll	90
30	The Track Junction	50	66	The Saddle	90
31	SE side of bouldered Knoll	50			
32	Foot of 3.0m cliff - Caution if coming from south	50	67	A Knoll	100
33	The Gully Mouth just East of 2.0m high Rail Embankment	50	68	The broad Summit	100
34	The Track & Saddle	50	69	The Dam (East side)	100
35	The Knoll	50	70	On the Spur	100
36	Head of the Gully	50	71	Light @ the End of a Tunnel	100
			72	The Summit	100

Important information	
Control Cards	Available from 1130 Sat.
Briefing	1145 Sat.
Start	1200 Sat.
Finish	24 hours later
Hash House	Open 1600 Sat. Closed 1300 Sun.
Fruit Drops	At water drops after 4.00 Sat afternoon
Astronomical	Sunset Saturday 1721 Moonrise Saturday The moon on the 26th is pretty big & bright, being just 3 days before full moon. It's already well up in the eastern sky at nightfall and overhead about 22.30 Sets in the WNW about 05:30 (azi 249).
	Sunrise Sunday 0711
Controls Used	71
Total Points	4050

Mystery Jelly Bean & Port Controls (not at the same place !)